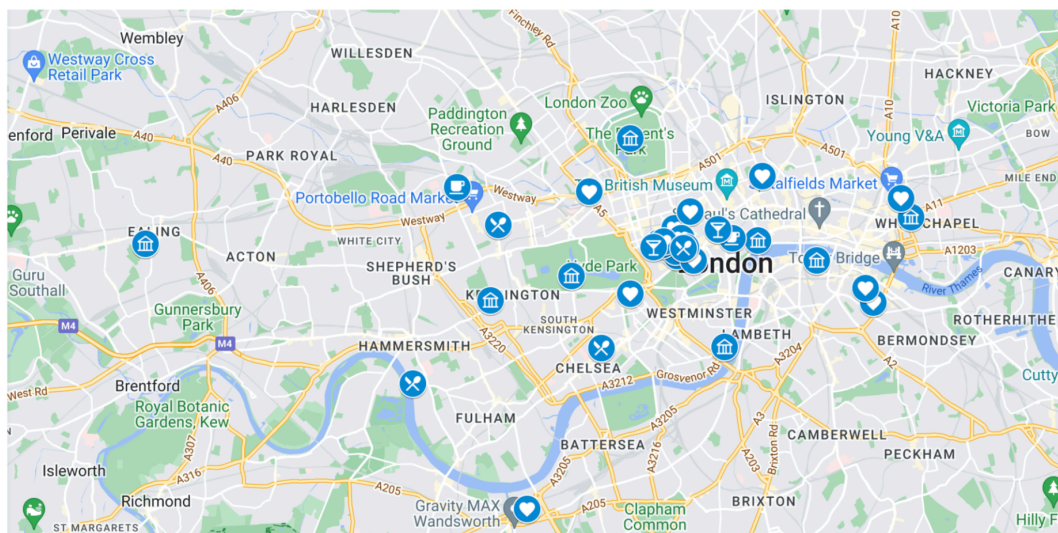


[← all stories](#)

City Guide

City Guide London – Summer '24

Things are heating up and London's art scene is buzzing with the bees once again. Grab your iced latte to-go, and get ready for Art Fix's roundup of not-to-be-missed shows, exhibits and artists in London this season.



New to London? Don't lose time getting lost – this handy [Art Fix map](#) has all our picks saved and ready for you. Share it with your travel companions and keep your phone charged!

MUSEUMS AND ART SPACES



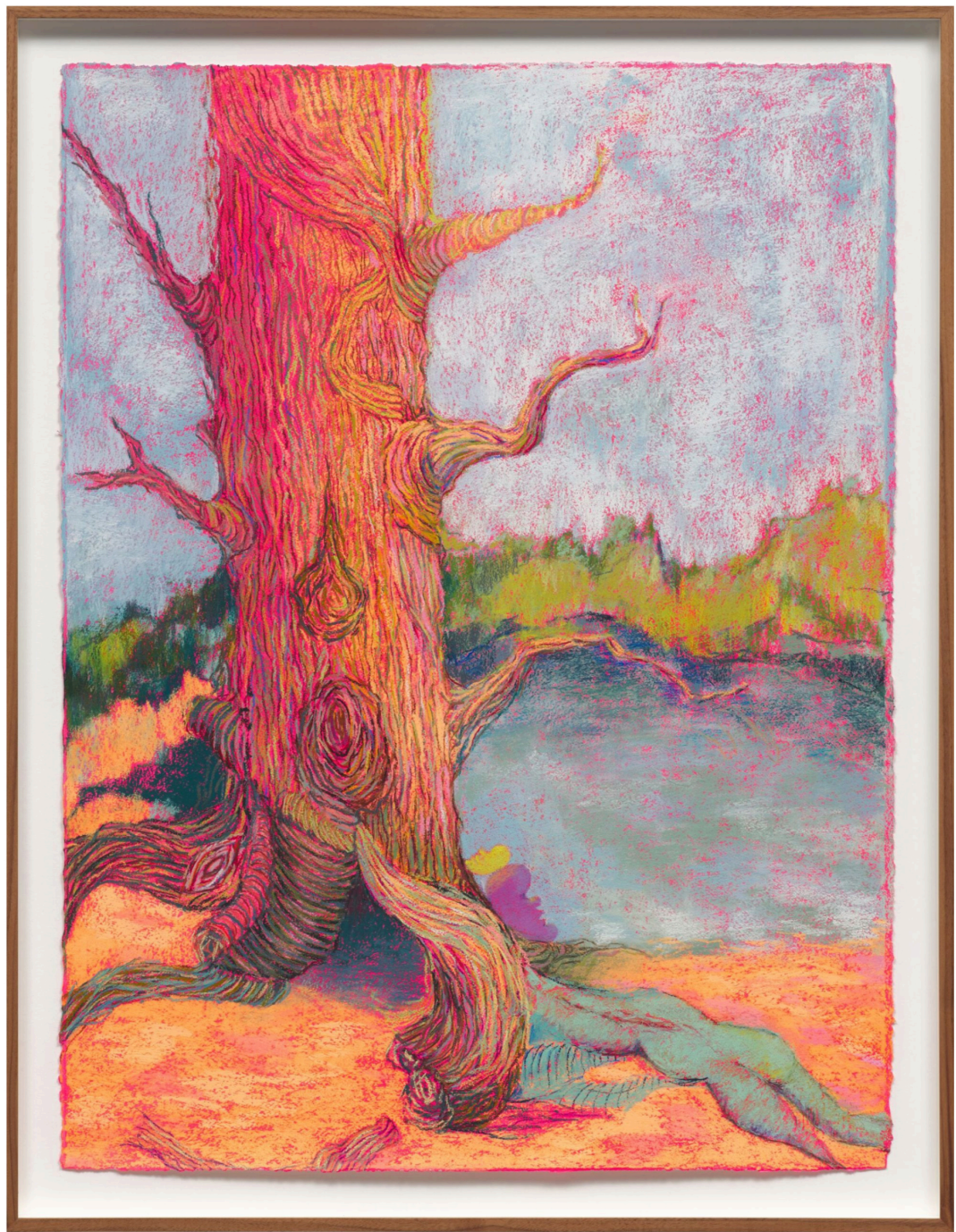


Yayoi Kusama at Liverpool Street Station

- Elizabeth Line, Liverpool Street Station
- art.tfl.gov.uk

Here's something to wake you up on your daily commute – 'Infinite Accumulation' is Kusama's first public installation, welcoming you into the hustle and bustle of North East London.





Hauser & Wirth | 'Digital Art School'

- From 22 Aug '24
- 23 Savile Row
- hauserwirth.com

Hospital Rooms is an initiative that aims to connect mental health services to artists and art spaces in an effort to bring creative solutions to mental healthcare. Their three-year programme, called 'Digital Art School', will be recreated in the North Gallery of Hauser & Wirth this summer.

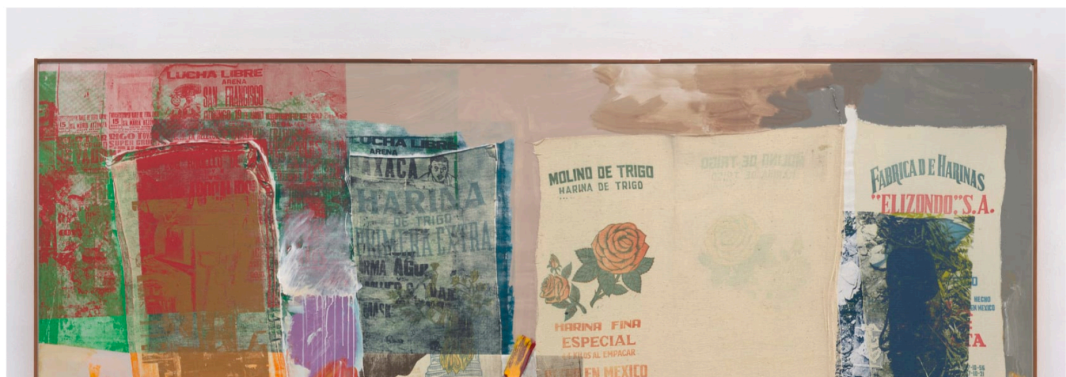




Kristin Hjellegjerde | Makiko Harris

- From 23 Aug '24
- 36 Tanner Street
- kristinhjellegjerde.com

Japanese-American visual artist Makiko Harris plays with gender expression and femininity with galvanised steel that subverts the preconceived sensuality of fishnet stockings.





Thaddaeus Ropac | Robert Rauschenberg

- Until 3 August '24
- 37 Dover Street
- ropac.net

A leading force in the field of Abstract Expressionism, Robert Rauschenberg's impressive six decade-long career has inspired generations of artists. This exhibition highlights his series of Combines from the 50s.



White Cube Bermondsey | Al Held

- Until 1 Sept '24
- 144 – 152 Bermondsey Street
- whitecube.com

Al Held's abstract expressionism was truly a sign of the times – his career is often lauded as pioneering hard-edged abstraction.

- Until 1 Dec '23
- 37 Dover Street
- ropac.net

These intensely colourful artworks play with the human form, taking inspiration from Richter's musical background.

Be the first to know about the launch of limited editions, new inside stories, and live events. Subscribe to our newsletter to stay up to date.

| first name



| last name

| email address

send

By giving us your email, you agree to our [Terms & Conditions](#) and [Privacy Policy](#).



[editions](#)

[episodes](#)

[about art fix](#)

[contact](#)

[partnerships](#)

[stories](#)

[privacy policy](#)

[terms & conditions](#)

ART FIX

© ART FIX2025